



## DA 10-130/T-EN54

- vandal-proof
- aluminium housing
- BS 5839



EN 54-24:2008  
**Ref. Nr.:** 003-14  
**ID-Code:** SAA-LS14  
1438-CPR-0234

ic audio GmbH, Boehringerstraße 14a,  
D-68307 Mannheim, Germany

CE-Symbol gemäß Richtlinie 93/68EWG

The 10W powered speaker is equipped with a 130mm full-range loudspeaker chassis and a 100V line transformer with 4 power adjustments. A robust powder-coated aluminum housing in RAL 9010, and a vandal-resistant feet ensure a permanent installation of this speaker. For additional reliability, a 2 pin-ceramic block and a thermal fuse is provided in a junction box and the speaker chassis is impregnated against wetness.

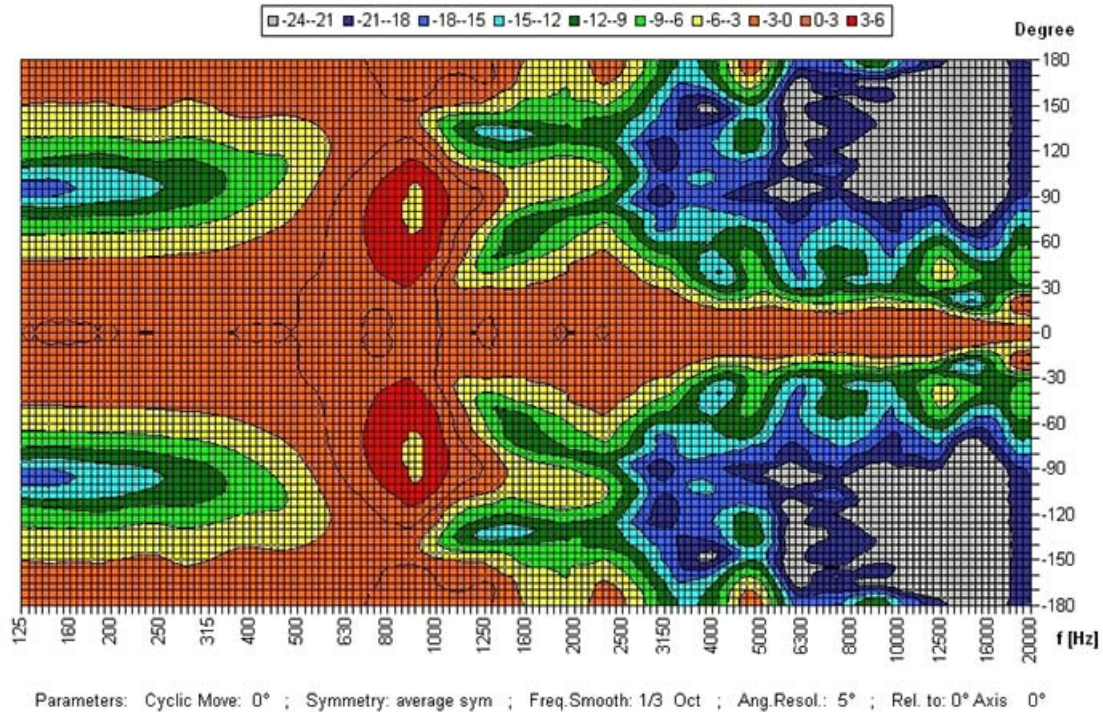
The speaker is also secured with the high protection class IP 66 against the risks of environmental influences.

Perfectly suitable for the installation in corridors and hallways. The speaker is compliant with the British Standard BS 5839, Part 8.

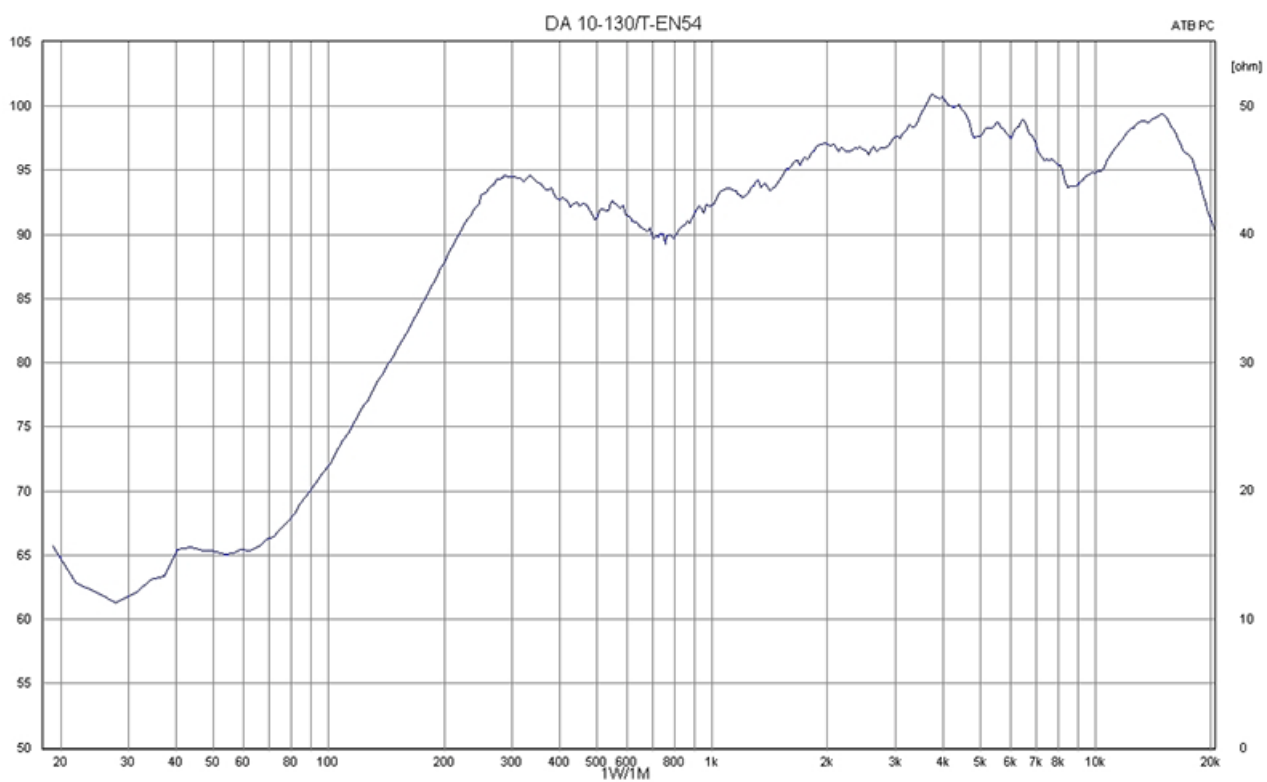
Special paint of the speaker in 4-digit RAL- or NCS- colour available at extra cost.

Polar Diagrams

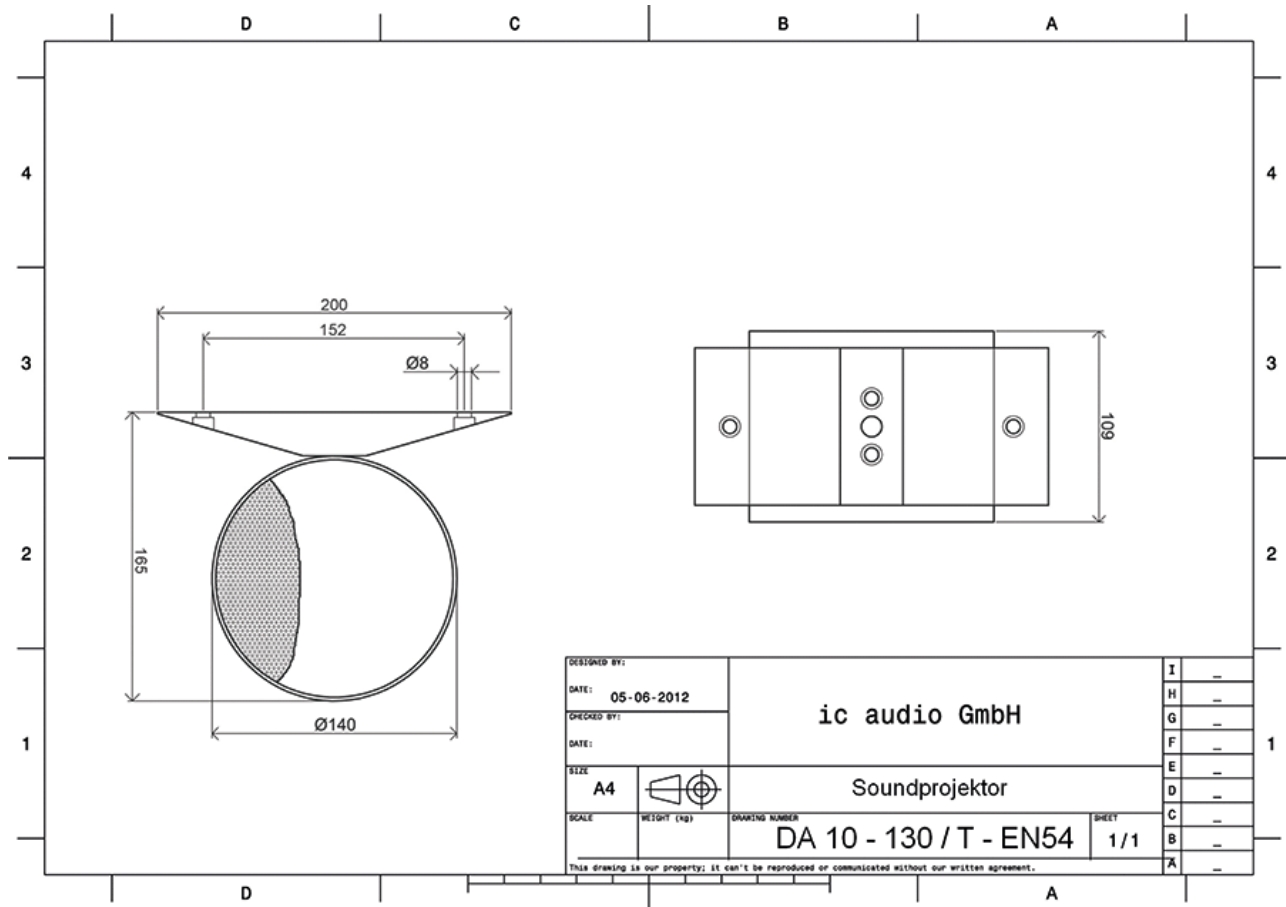
Copyright by Four-Audio GmbH & Co KG Licensed to AAC



## Frequency Response Diagrams



## Technical Diagrams



### Technical Data (Electical)

Description	DA 10-130/T-EN54
Power	10/6/3/1,5 W
Frequency Range	200 - 22.200 Hz
Frequency Response	150 - 23.500 Hz
SPL 1W/1m, IEC 268-5	101,0 dB
SPL , 1W/4m, IEC 268-5	89,0 dB
SPL Pmax/4m, IEC 268-5	99,0 dB
Sensitivity EN54-24, 1W/4m	78,9 dB
Dispersion -6dB, 500Hz	360°
Dispersion -6dB, 1KHz	360°
Dispersion -6dB, 2KHz	133°
Dispersion -6dB, 4KHz	52°

### Technical Data (Mechanical)

Dimensions	165x200x109 mm
Weight (net)	1,80 kg
Temperature range	-20 / +90 °C
Mounting	screws
Connector	2-pin ceramic block
Maximum cable cross section	8mm <sup>2</sup>
Max. cable cross section loop	2x2mm <sup>2</sup>
Colour	RAL 9010

Product Attributes

Measurements according to DIN IEC 268-5 | RoHS compliant (2002/95/EG)



Article Nr.: 20122649

Packing Unit: 12

